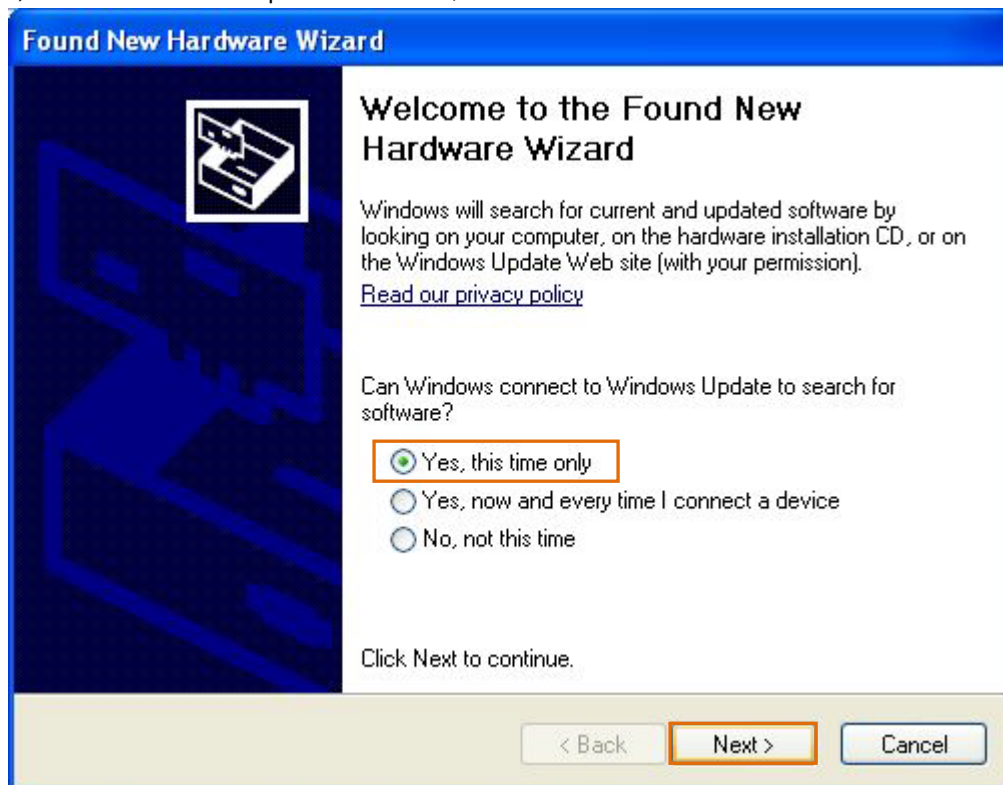


Woosim VCP driver installation

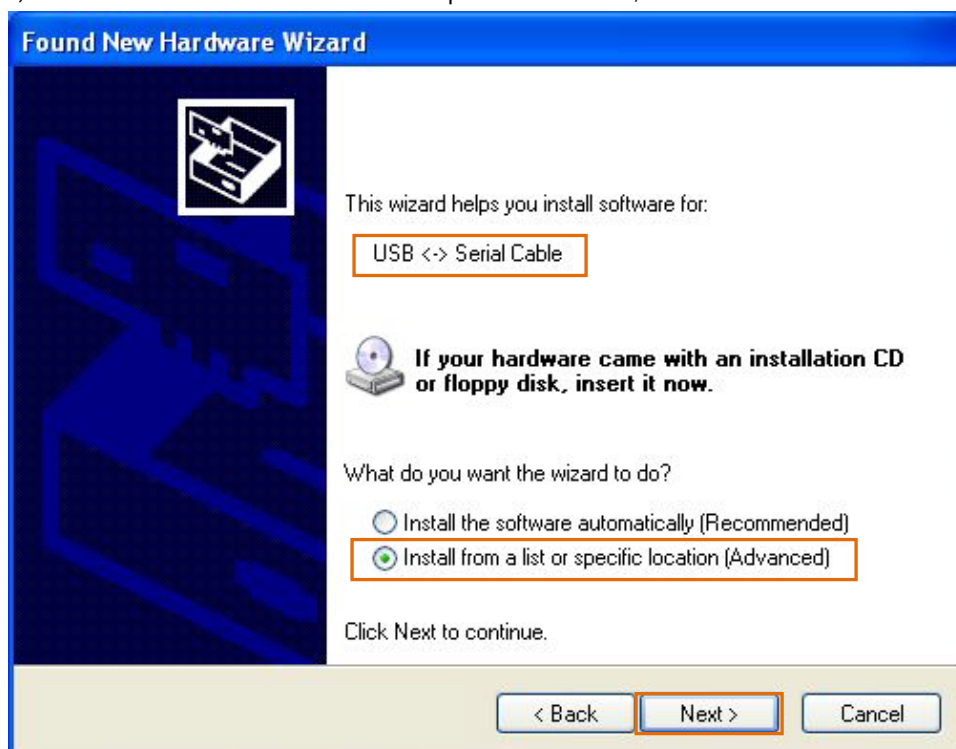
WOOSIM SYSTEMS Inc.
#501, Daerung Technotown 3th,
448, Gasan-Dong, GeumChun-Ku,
Seoul, Korea
Tel : +82-2-2107-3700
Fax : +82-2-2107-3707
URL: <http://www.woosim.com>

1. Install VCP driver(hand-operated) – USB version printer

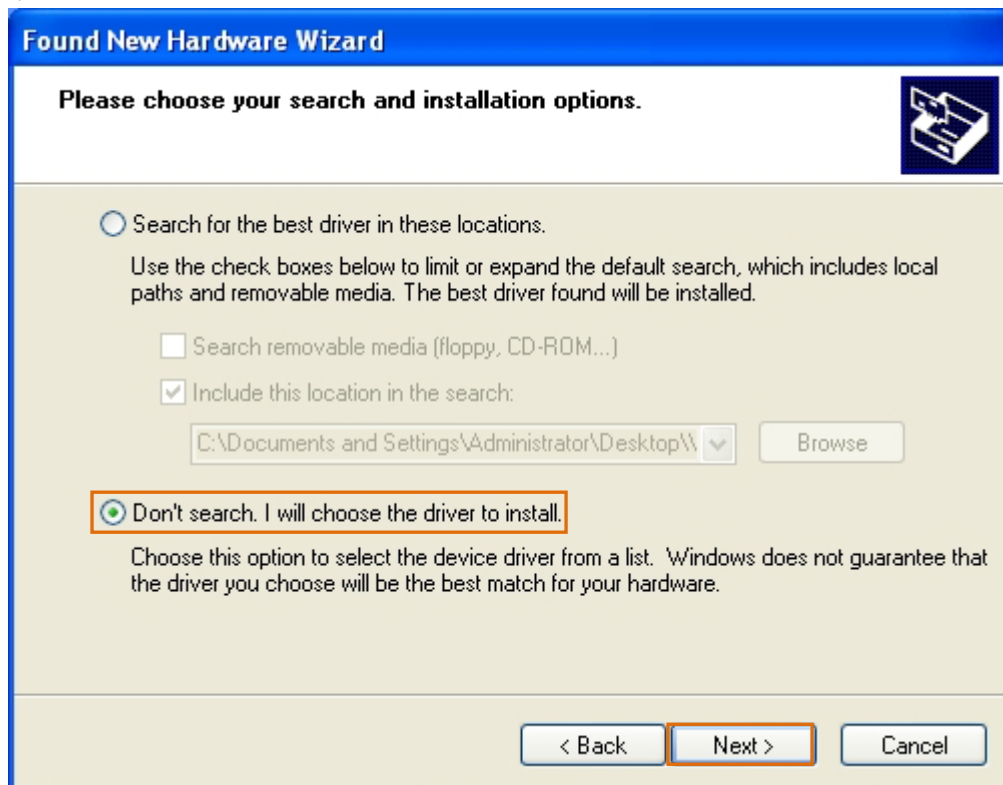
1) After connect USB port with cable, and then click next button



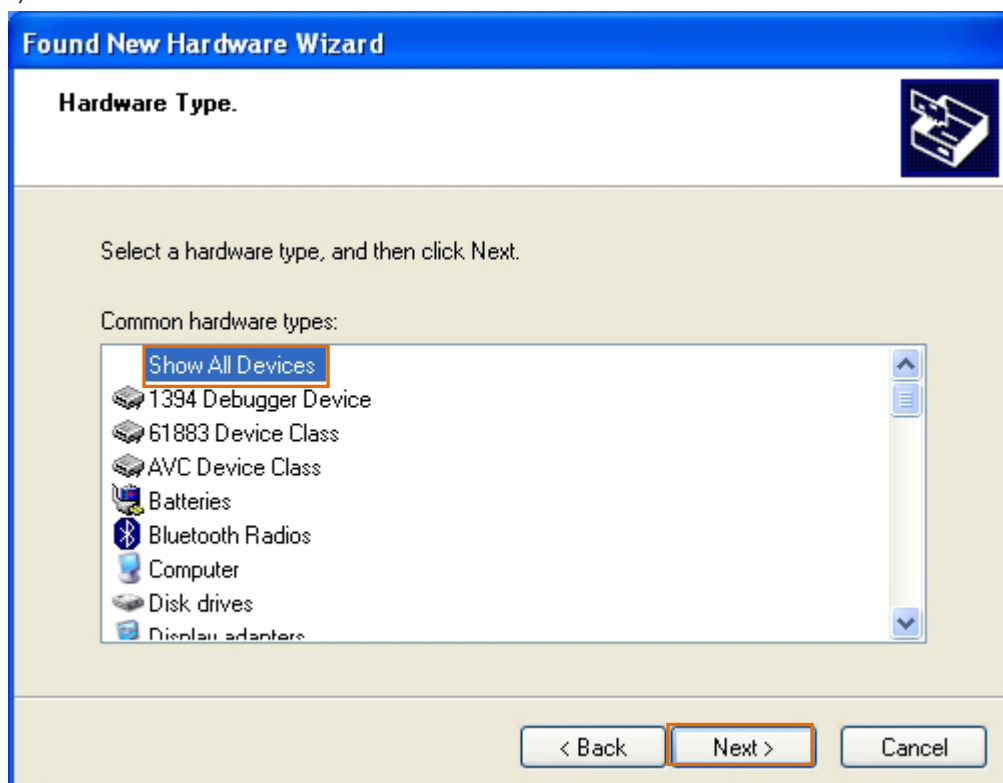
2) After check 'install from a list or specific location', and then click next button



3) After check 'Don't search. I will choose the driver to install' and then click Next button



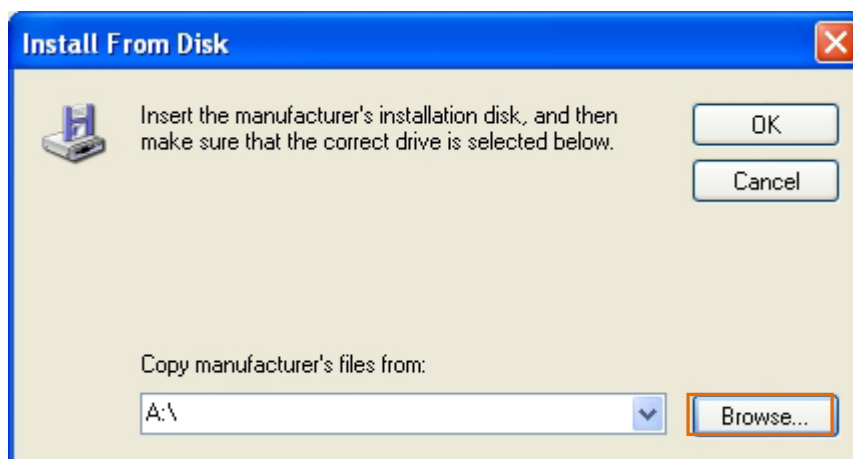
4) After select 'Show All Devices' and then click Next button



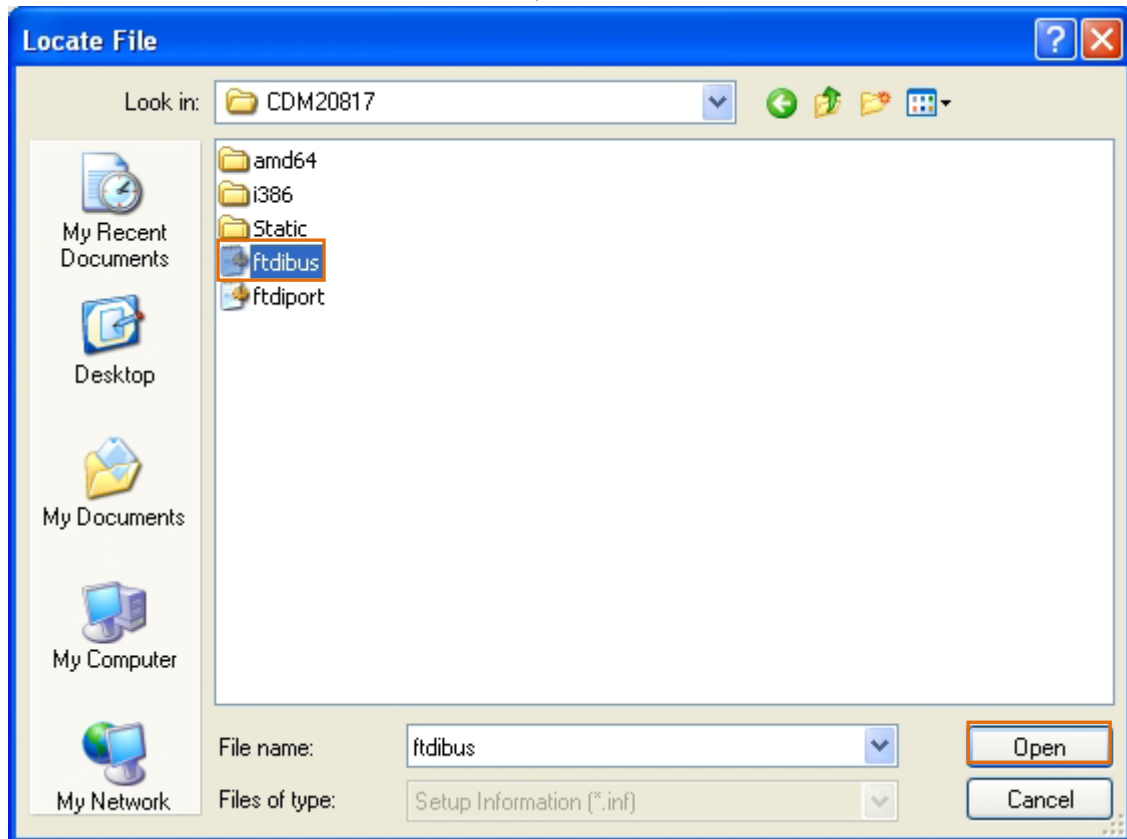
5) Click have Disk... button



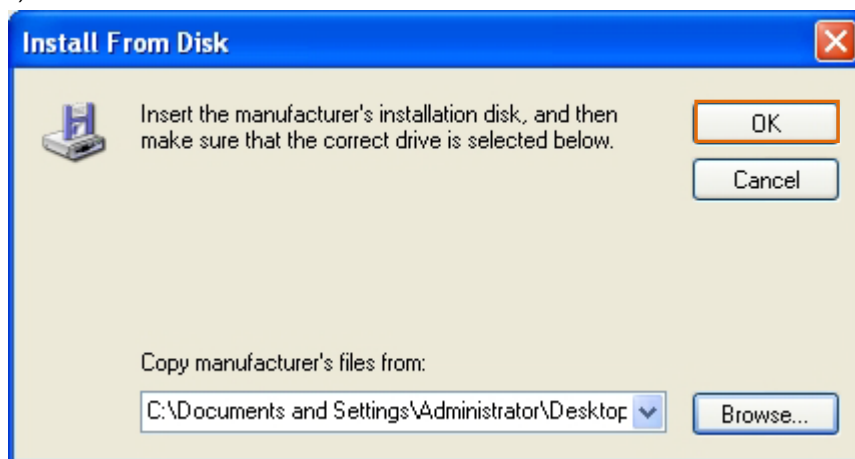
6) Click Browse... button



7) After select 'ftdibus' file and then click Open button



8) Click OK button



9) Click Next button



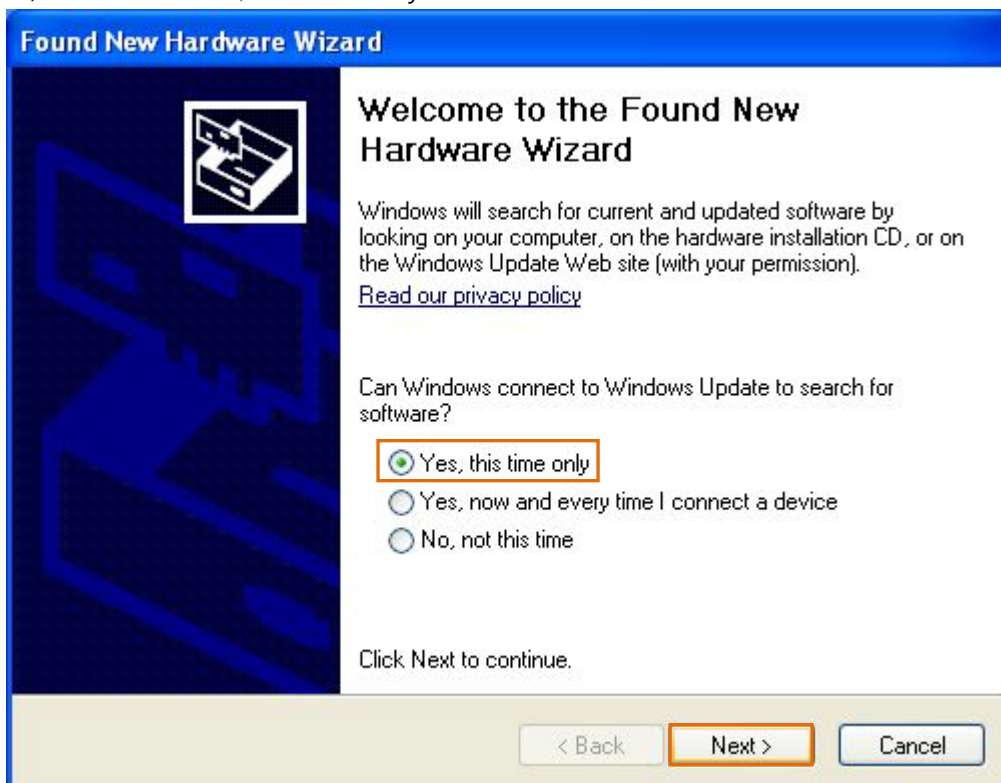
10) Downloading...



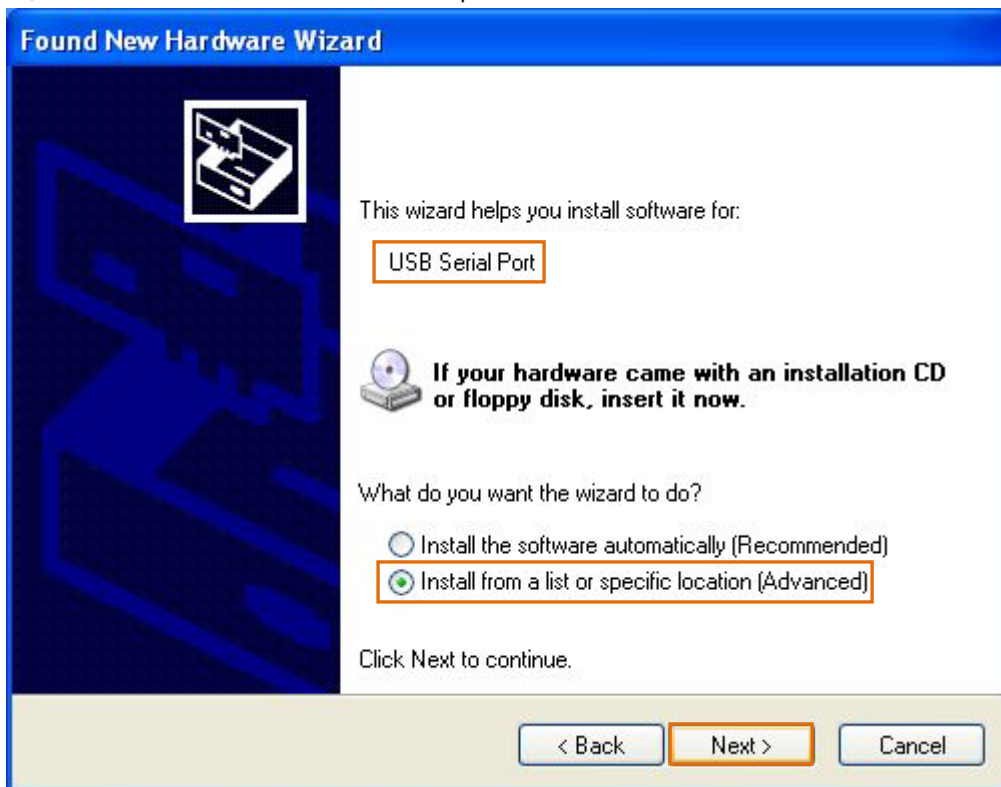
11) Click Finish button.



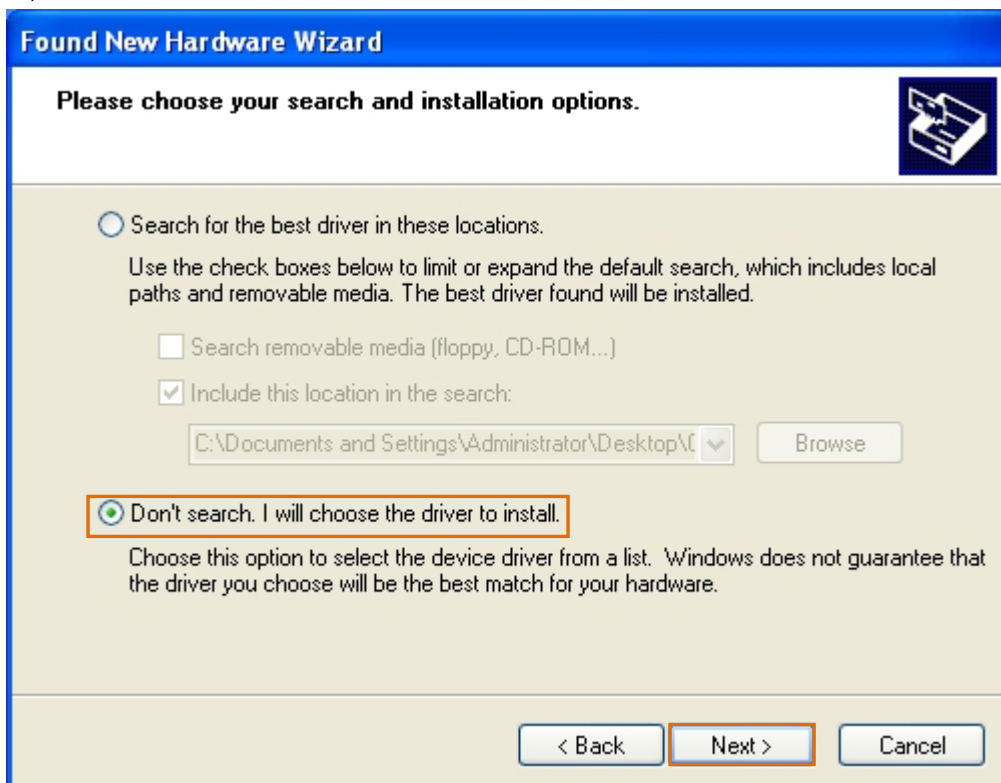
12) After check 'Yes, this time only' and then click Next button



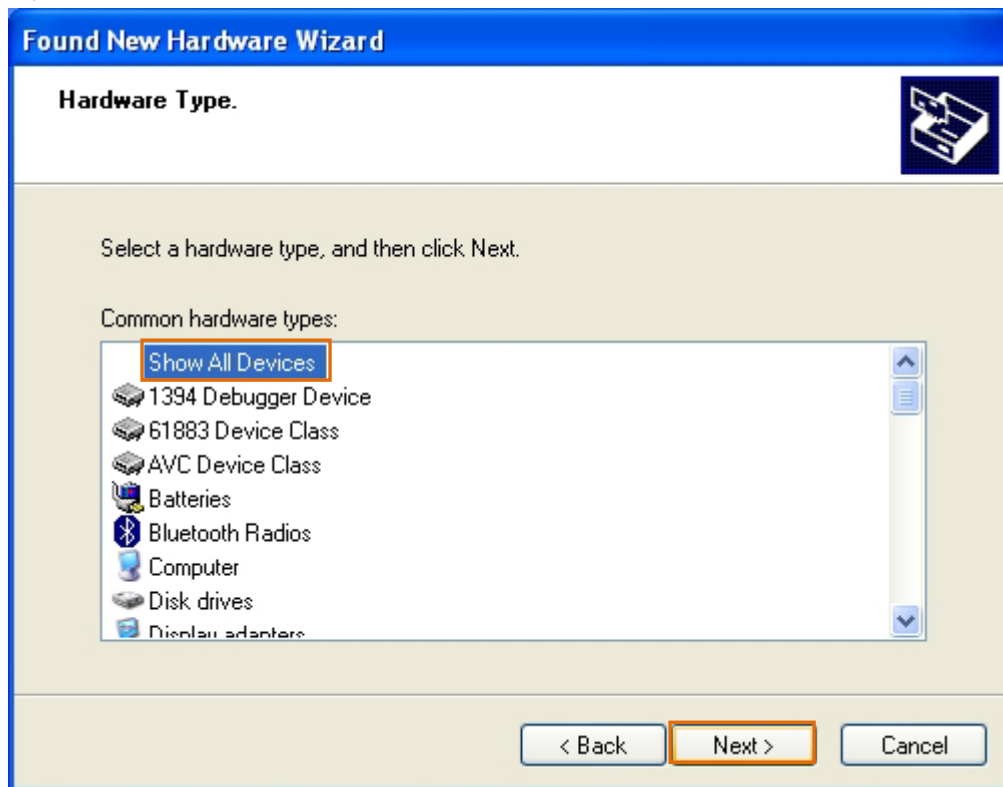
13) After check 'install from a list or specific location', and then click next button



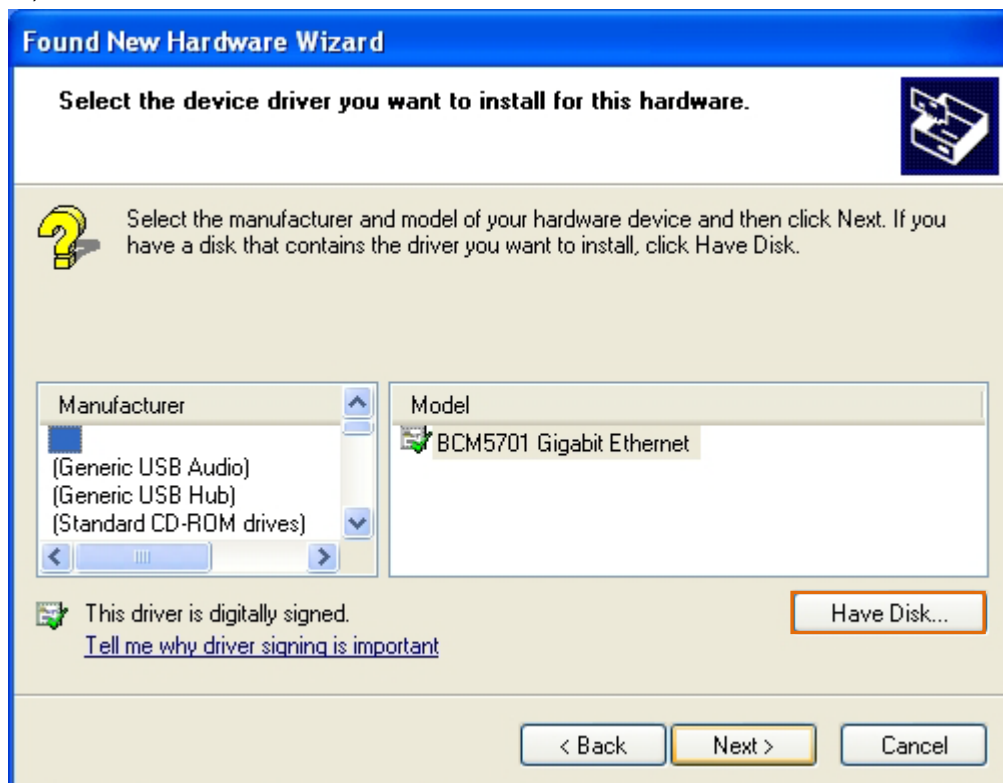
14) After check 'Don't search. I will choose the driver to install' and then click Next button



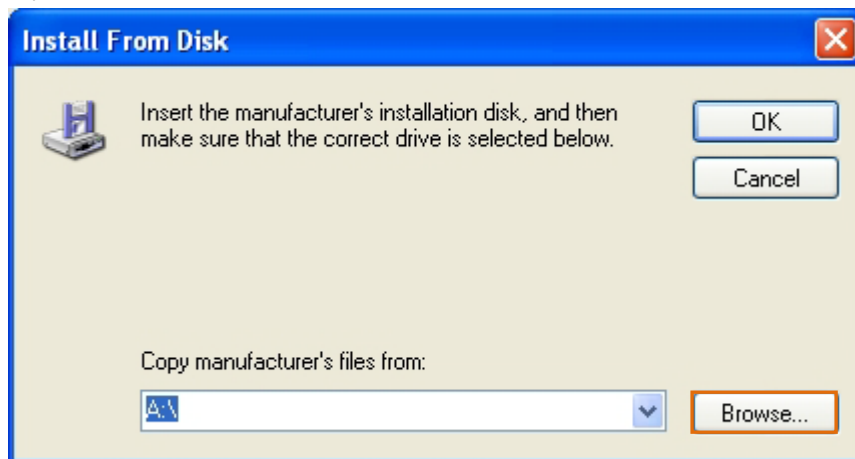
15) After select 'Show All Devices' file and then click Next button



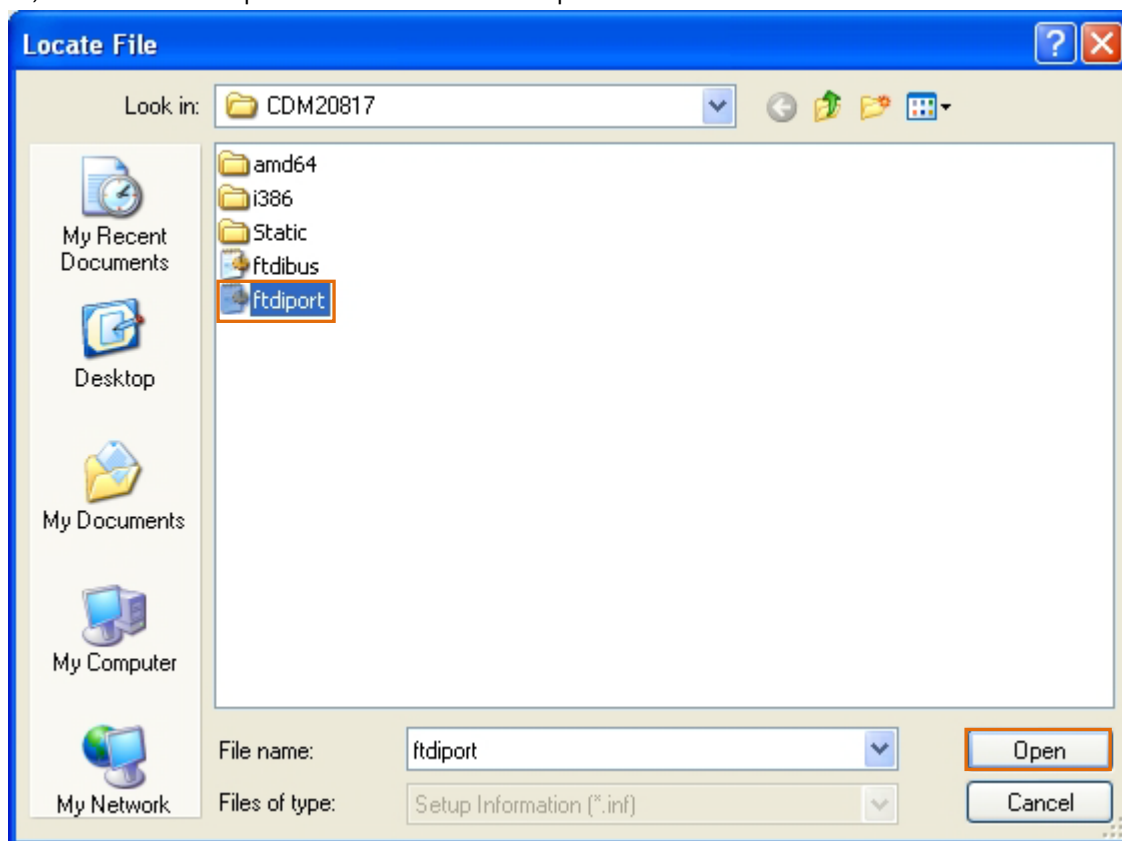
16) Clic Have Disk.. button



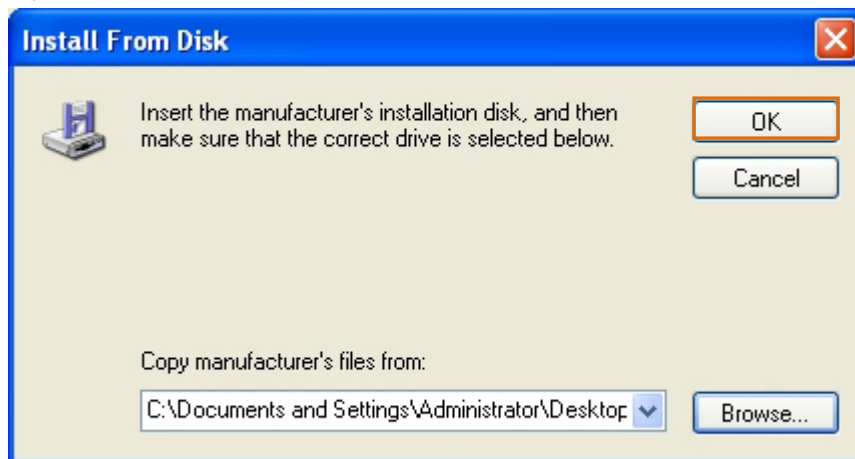
17) Click Browse...button



18) After select 'ftdiport' file and then click Open button



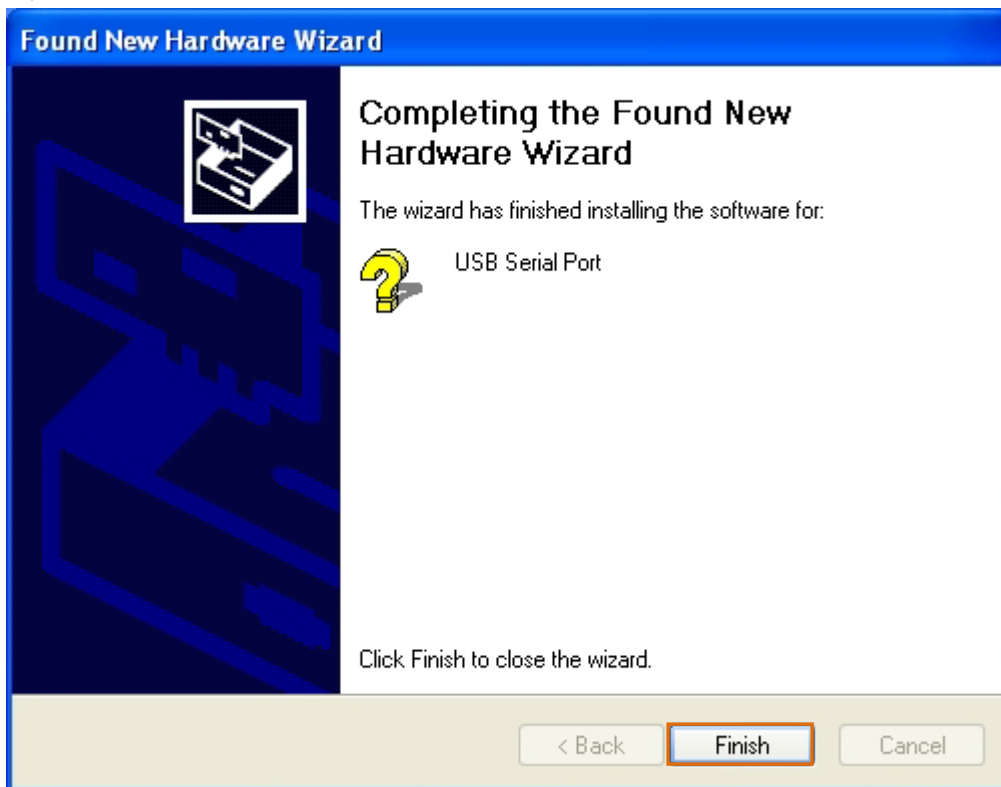
19) Click OK button



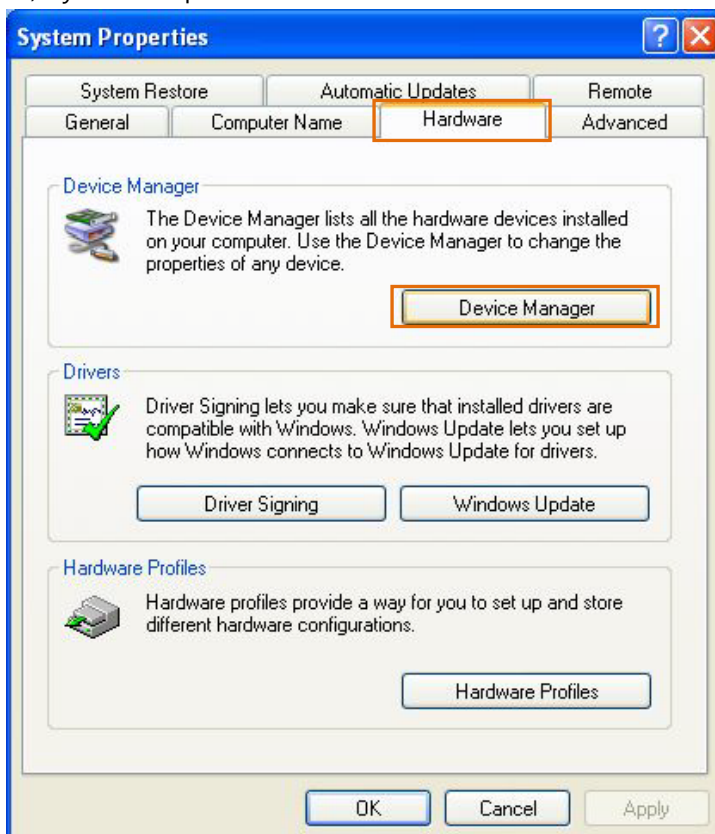
20) Click Next button



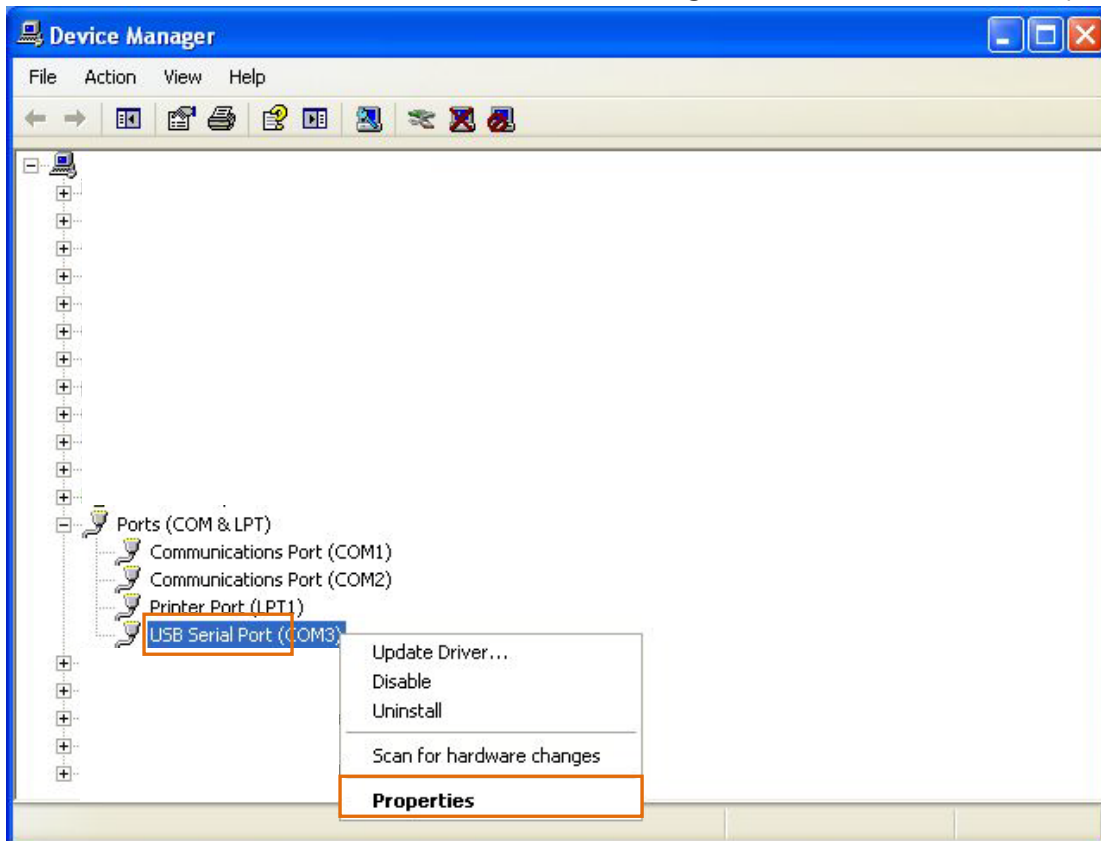
21) Click Finish button



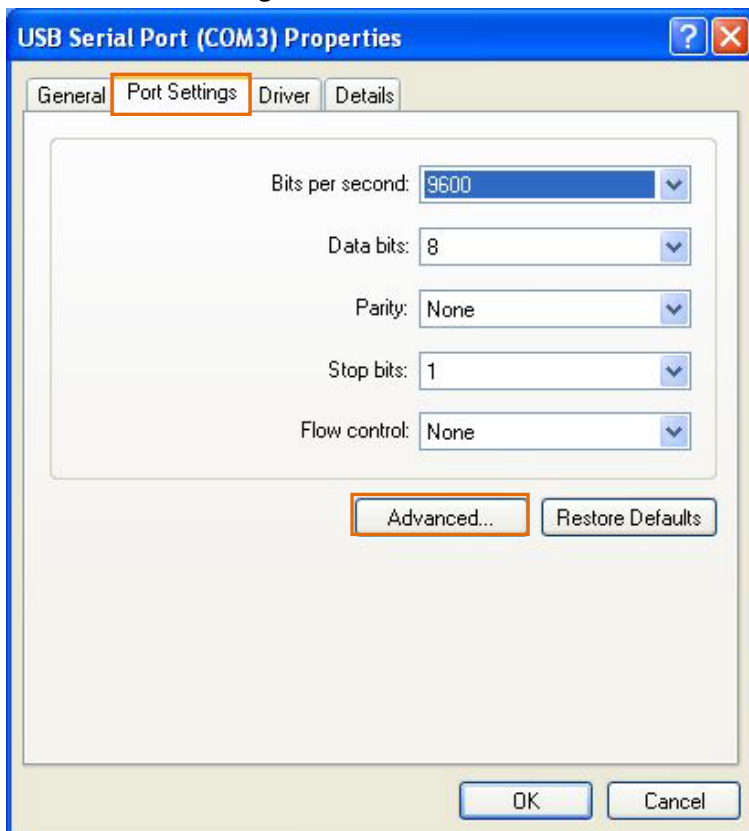
15) System Properties → Hardware tab → Click Device Manager button



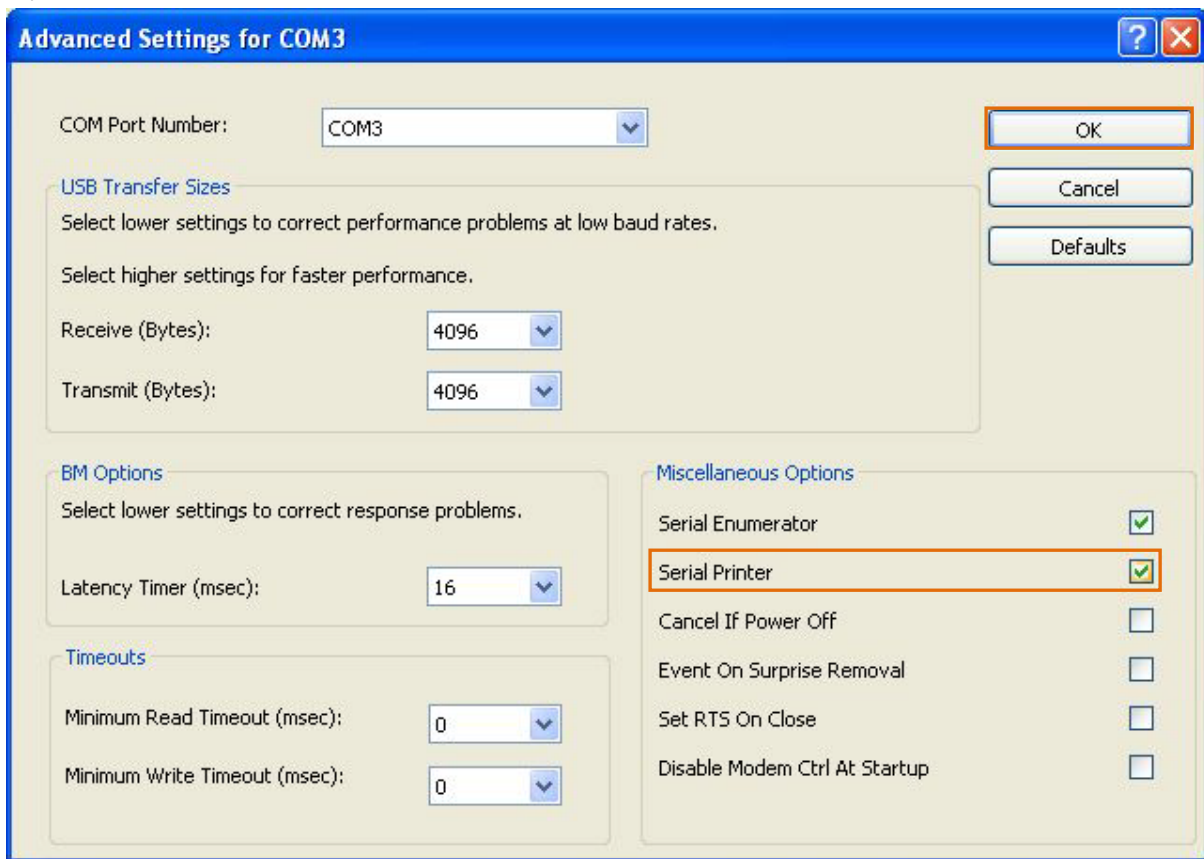
16) After check created USB Serial Port and then, click right button in mouse → Select properties



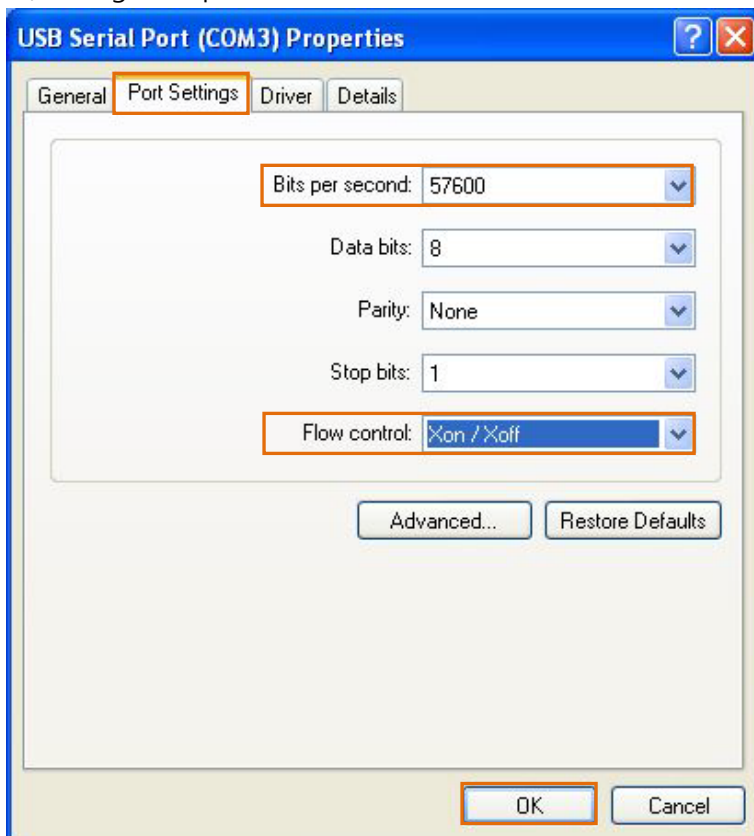
17) Select Port Settings tab → Click Advanced button



18) After select Serial Printer and then click OK button



19) Change Bits per second and Flow control and then click OK button

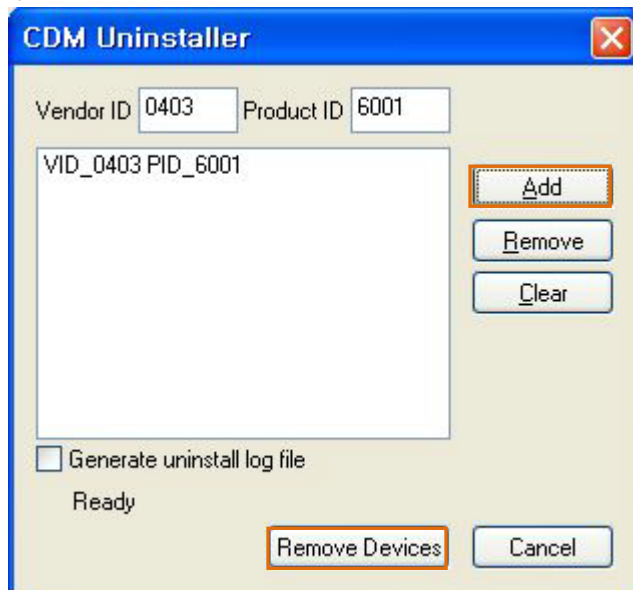


2. Delete VCP driver – USB version printer

1) Execute CDMuninstallerGUI_v1.3.exe file



2) Click Add button and then Remove Devices button



3) Click OK button

